

2024

ROOM ELECTRONICS

LOVO UK

ELECTRIC KETTLE TRAY SET

LOVO Black double wall electric kettle welcome tray sets



Special features:

Removable Drip Tray, Heat Resistant Handle, Automatic Shut Off, Stain Resistant, Single Hand Operation Removable



ELECTRIC KETTLE

LV-FL-3201 BLACK

Product Description:

Size:	200x205x142mm
Color:	Black
Capacity:	0.8 litre
Material:	ABS+SS304
Voltage:	220V-240V(50-60Hz)
Power supply:	1600w
Plug:	



ELECTRIC KETTLE

LV-K-0106 BLACK

Product Description:

Size:	200x205x142mm
Color:	Black (matt)
Capacity:	1.0 litre
Material:	SUS 304
Voltage:	220V~50Hz
Power supply:	1000w
Plug:	



ELECTRIC KETTLE

LV-K-O105 WHITE

Product Description:

Size:	200x205x142mm
Color:	White (matt)
Capacity:	1.0 litre
Material:	SUS 304
Voltage:	220V~50Hz
Power supply:	1000w
Plug:	



ELECTRIC KETTLE

LV-K-0809 BLACK

Product Description:

Size:	200x205x142mm
Color:	Black (matt)
Capacity:	1.0 litre
Material:	SUS 304
Voltage:	220V~50Hz
Power supply:	1000w
Plug:	



ELECTRIC KETTLE

LV-K-0806 WHITE

Product Description:

Size:	205x240x142mm
Color:	White (matt)
Capacity:	0.8 litre
Material:	SUS 304
Voltage:	220V~50Hz
Power supply:	1000w
Plug:	



ELECTRIC KETTLE

LV-K-0809 GREEN

Product Description:

Size:	200x205x142mm
Color:	Green (matt)
Capacity:	1.0 litre
Material:	SUS 304
Voltage:	220V~50Hz
Power supply:	1000w
Plug:	



WALL MOUNTED HAIR DRYER

LV-FL-2115 WHITE

Product Description:

Voltage:	220V-240V(50Hz-60Hz)
Color:	White (Glossy), Black
Material:	ABS
Air Speed:	20m/s
Power supply:	1600w
Plug & Socket	UK plug No.8) - (2 sockets, 220V)
Feature:	Integrated wall hanging, Iron air outlet, Overheat protection



HAIR DRYER

LV-F2 BLACK

Product Description:

Voltage:	220V-240V(50Hz-60Hz)
Color:	Black (Glossy)
Material:	ABS plastic
Air Speed:	3 hot wind, 2 cool wind
Power supply:	2000 Watts
Plug & Socket	UK plug No.8 - (2 sockets, 220V)
Feature:	Overheating protection

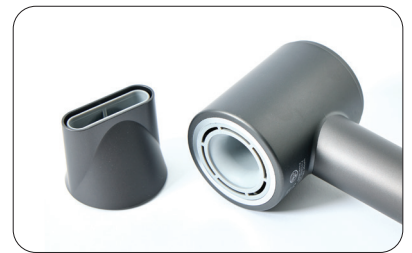


WALL MOUNTED HAIR DRYER

LV-FL- 2205 BLACK

Product Description:

Voltage:	220V-240V(50Hz-60Hz)
Color:	Black (Glossy)
Material:	ABS plastic
Air Speed:	3 hot wind, 2 cool wind
Power supply:	1800w
Plug & Socket	UK plug No.8
Feature:	Warm And Cold Air Optional(3 Speed Settings)/Overheating protection



HAIR DRYER

LV-F1-GREY

Product Description:

Voltage:	220V~240V
Color:	Grey
Product Size:	270*71*90mm
Air Speed:	2 gears wind speed, 3 gears wind temperature
Power supply:	1600W
Plug & Socket	UK plug No.8) - (2 sockets, 220V)
Feature:	110000rpm High Speed Brushless Motor



WALL MOUNTED HAIR DRYER

LV-FB-629 GREY

Product Description:

Voltage:	220-240V 50Hz-60Hz 1600W
Color:	Dark Grey / Light Grey / Black / White
Product Size:	165*195*68mm
Air Speed:	Wind speed 12.5-13m/s
Power supply:	1600W
Plug & Socket	UK plug No.8) - (2 sockets, 220V)
Feature:	2W turn high-speed motor for fast dry



WALL MOUNTED HAIR DRYER

LV-FB-619 BLACK

Product Description:

Voltage:	220V~
Color:	Black / White / Dark Grey / Light Grey
Product Size:	182*227*75mm
Air Speed:	High air flow
Power supply:	1300W
Plug & Socket	UK plug No.8 - (2 sockets, 220V)
Feature:	Independent cold air design, three gears to adjust the temperature



HAIR DRYER

LV-FB-618 BLACK

Product Description:

Voltage:	220V~240V
Color:	Black
Product Size:	165*195*68mm
Air Speed:	Shift:2-gear wind, cold and hot switching
Power supply:	1875W
Plug & Socket	Cold and hot air, Foldable, Overheating protection



HAIR DRYER

LV-F1 WHITE

Product Description:

Voltage:	220V~240V
Color:	White
Product Size:	270*71*90mm
Air Speed:	2 gears wind speed, 3 gears wind temperature
Power supply:	1600W
Feature:	Brushless Motor, Intelligent Constant, Temperature Control

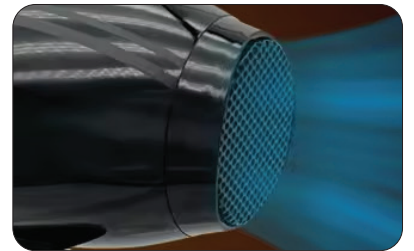


HAIR DRYER

LV-FL-2308

Product Description:

Voltage:	220V-240V(50/60Hz)
Color:	Silver Grey
Product Size:	180*48*210mm
Air Speed:	18m/s
Power supply:	1600W
Plug & Socket	UK plug
Feature:	Upgrade mute design, Overheat protection, Magnetic attachments

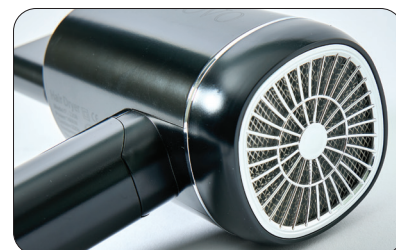


HAIR DRYER

LV-2301

Product Description:

Voltage:	220V-240V(50/60Hz)
Color:	Black
Product Size:	298*96*290mm
Air Speed:	17.5m/s
Power supply:	1900w
Plug & Socket	UK plug No.8) - (2 sockets, 220V)
Feature:	Multiple gear adjustment, Strong wind, Thermostat hair care, Magnetic suction nozzle



HAIR DRYER

LV-FL-2208 BLACK

Product Description:

Voltage:	220V-240V(50Hz-60Hz)
Color:	Black
Material:	ABS
Air Speed:	30m/s
Power supply:	1600w
Plug & Socket	UK plug No.8
Feature:	Warm And Cold Air Optional(3 Speed Settings)/Overheating protection/Negative ions



COFFEE MACHINE

LV-HS-201B BLACK

Product Description:

Product size:	300x120x230mm
Voltage:	220V-240V~50Hz
Color:	Black / White
Power supply:	1400W
Features:	19bar pump powerful pressure for rich taste, 800ml detachable transparent water tank
	Espresso and Lungo cup potion, Adjustable cup support & drip tray
	Compatible with Nespresso capsule, Auto power off in 5 minute in energy saving mode
	With overheating and overpressure protected device, safe and reliable



COFFEE MACHINE

LV-BYS-CM-FS-5 1 1 BLACK

Product size:	33x10.5xh23.3cm
Voltage:	Black
Color:	0.8 liters
Power supply:	3x1 m.1
Features:	Heatexchanger 850 W, Heating time 60 seconds, Pump 19 BAR
	Programmable doses
	Adjustable temperature
	Energy saving

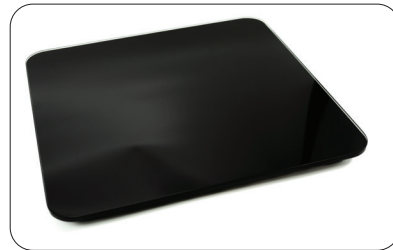


ELECTRIC IRON

LV-HS-05 BLACK

Product Description:

Unit Size:	L292 x W121 x H145 mm
Soleplate Size:	L219 x W121 mm
Voltage:	220-240V 50/60Hz, 1800W
Water tank capacity:	320ML
Soleplate:	Ceramic
Features:	Adjustable Temperature for different fabrics Dry/Spray/Steam/Burst steam/Self-cleaningAnti-calc/Anti-drip/Auto shut-off Horizontal position after 30 seconds, Vertical position after 8 minutes Dial thermostat control, Temperature pilot light, Soft handle



BATHROOM SCALE

LV-H-02

Product Description:

Dimension:	30*30*2.3(cm)
Max weight:	180kg/396LB
Voltage:	220-240V 50/60Hz, 1800W
Material:	Tempered glass, Stainless Steel , ABS
Power Source:	2*1.5V AAA Batteries
Features:	With 6MM Tempered Glass With S/S Platform, blue backlight, Unit kg/lb/st, Automatic Zero resetting



IRONING HOLDER

LV-K-SD001

Product Description:

Size:	H35 ×W13.5cm
Color:	Black / White
Type:	Wall mounted ironing holder / Apply to hang ironing board



Bluetooth Speaker with Alarm Clock

D8-PD

Product Description:

Display:	2.5-inch LCD screen
Audio source:	Bluetooth, USB
Bluetooth version:	4.2
Bluetooth range:	10M
Wireless charging:	15W
Output power:	3W + 3W
Features:	Multi-level dimmable, Snooze function, Daylight-saving time mode, Synchronise time with one click



Bluetooth Speaker with Alarm Clock

HV3pro

Product Description:

Product size:	15 x 8.5 x 7cm
Display:	Large LED digital screen
Bluetooth version:	5.0
Bluetooth range:	10M
Wireless charging:	15W
battery:	Built-in 1200mha lithium
Power:	AC 110-240V, 50/60Hz, DC 9V 2Av
Features:	Multi-level dimmable, Single day alarm, Snooze function, Built-in 3 kinds of white noise to help sleep



Bluetooth Speaker with Alarm Clock

D8-PD ?

Product Description:

Product size:	5*4.2*3.1 Inch (128*108*80MM)
Material:	ABS plastic
Color:	Black
Bluetooth version:	JL5.0
Battery Capacity:	1200 mh
Speaker Unit:	40mm/ 5Watt*2, Double loudspeaker
Port Type:	Type-C, DC/5V
Features:	TF SD Card/USB/FM/AUX/Digital Clock/Dual Alarm/BT5.0/Hands-free call



Bluetooth Speaker with Alarm Clock

B12

Product Description:

Display:	Large LED screen
Bluetooth version:	5.0
Bluetooth Range:	10M
Output Power	8 + 8W
Features:	Ambient night light, High quality speaker system, Synchronise time with one click, Support for Android / Apple Devices, Single day alarm, Snooze function

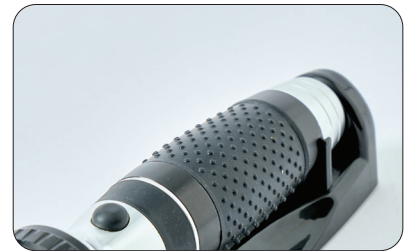


WALL MOUNTED EMERGENCY FLASHLIGHT

LV-K-SD001 BLACK

Product Description:

Battery Capacity:	1200 mah
Color:	Grey / Black
Charging Duration:	2-3H
Charge Power:	5V 500 mA
View Distance:	20-30m
Service Time:	10H
Feature:	USB Charging Sensor Switch Super Long Standby Time Far View Distance Durable LED Bulb Fluorescence Indicator



WALL MOUNTED FLASHLIGHT

LV-HSF-01

Product Description:

Product Size:	185*60*55 mm(ϕ 45* ϕ 26*175 mm)
Color:	Black
Bulb type:	13 LEDs
Battery:	3 AA
Material:	Aluminum alloy shell, anti-slip rubber handle
Attachment:	Charging base rack, fixing screws each item
Feature:	Rechargeable



TELEPHONE

SN-005 BLACK

Product Description:

Size:	L600xW450xH670mm
Color:	Black
Feature:	SPEED DIAL BUTTON (+8, +5, +3, +0)
	waterproof and moistureproof.
	Compatibilited with multiple of mainstream switches
	Dual tones electronic ringing, adjustable speaker volume
	Hand-free call volume multilevel adjustable
	Automatic take-up function/ Auto re-dial
	Desk and wall mountable



TELEPHONE

LV-SN-0001B

Product Description:

Size:	L600xW450xH670mm
Color:	Black
Feature:	SPEED DIAL BUTTON (+10, +5, +3, +0)
	14 Digits Memory
	Compatibilited with multiple of mainstream switches
	Dual tones electronic ringing volume 2 level adjustable
	Hand-free call volume multilevel adjustable
	Automatic take-up function/ Auto re-dial
	Desk and wall mountable



TELEPHONE

LV-HS-011

Product Description:

Box Size:	L600xW450xH670mm
Color:	Beige
Feature:	SPEED DIAL BUTTON (+10, +5, +3, +0)
	14 Digits Memory
	Compatibilited with multiple of mainstream switches
	Dual tones electronic ringing volume 2 level adjustable
	Hand-free call volume multilevel adjustable
	Automatic take-up function/ Auto re-dial
	Desk and wall mountable



MINI BAR

LV-BC-40A BLACK

Product Description:

Capacity:	40L
Voltage:	220-240V 50/60Hz
Color:	Black
Product Size:	W400 x D420 x H530mm
Type:	Thermo Electric Mini Bar
Power supply:	55W
Feature:	Automaticaly Evaporating Drain water



MINI BAR

LV-CB-40SA WHITE

Product Description:

Voltage:	220-240V 50/60Hz
Color:	White
Product Size:	W400 x D420 x H570mm
Type:	Compressor Mini Fridge
Power supply:	63W
Temperature Range:	5-12 C



MINI BAR

LV-HS-42A

Product Description:

Capacity:	42L
Voltage:	220-240V 50/60Hz
Color:	Black,White
Product Size:	420×420×515mm
Heater Power:	10W
Power supply:	48W
Feature:	Automaticaly Evaporating Drain water



MINI BAR

LV-XC45

Product Description:

Capacity:	32L
Voltage:	220-240V 50/60Hz
Color:	White
Product Size:	W399 x D440 x H655mm
Control system:	Electronic thermostat
Control panel:	Electric
Temperature range:	1~3, 4~10, 11~13 C



IRONING BOARD

LV-IBO1-1

Product Description:

Board size:	90x30 cm
Full size:	122x30x7cm
Color:	Silver
Material:	Steel
Surface treatment:	Powder coating
Thickness of felt:	8mm
Total height:	80cm, adjustable height



IRONING BOARD

LV-IB03

Product Description:

Board size:	110x33cm
Frame Color:	Silver Gray
Board Color:	Silver Gray
Cover Material:	Cotton with Felt Underlay
Maximum Height:	85cm
Thickness of felt:	10mm
Height Adjustment:	7 Levels



IRONING BOARD

LV-IB03

Product Description:

Board size:	110x33cm
Frame Color:	Black
Board Color:	Black
Cover Material:	Cotton with Felt Underlay
Maximum Height:	85cm
Thickness of felt:	10mm
Height Adjustment:	7 Levels



SAFE BOX

LV-17E

Product Description:

Door thickness:	2.2mm
Body thickness:	1mm
Product Size:	H170*W230*D170mm
Feature:	Solid steel locking bolt, Electronic Digital lock



SAFE BOX

LV-VE2042A

Product Description:

Size:	W420xD370xH200mm
Color:	Black
Material:	Solid, arc-welded heavy-gauge steel construction. finish or Sand texture powder coating finish
User management:	3-6 digit guest code
Hotel management:	6 digit override master code/mechanical key override
	5 minutes freeze system in case of wrong code for 4 times
Features:	Low battery indicator, Powered by 4 x AA, LED display screen



KETTLE TRAY

LV-FL3201

Product Description:

Color	Black
Size	380*260*20mm
Plug	UK Plug



lovouk.com

Distributed by

 **INFINITY**
HOTEL SUPPLIES LLC

+971 55 387 3297

sales@infinityhs.ae

2nd Floor Mohd.Obaid Al Majid bldg
Marrakech Street, Dubai,
UAE.